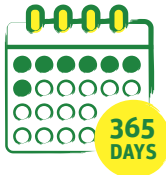




**HAMPSHIRE AND[®]
ISLE OF WIGHT
AIR AMBULANCE**

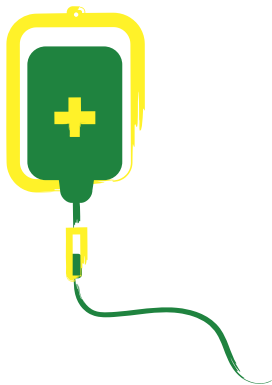
YOUR LOCAL AIR AMBULANCE FACT SHEET



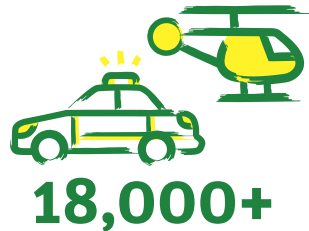
We're ready to respond 365 days a year, seven days a week



Our doctors, paramedics, pilots and dispatchers are on duty from 7am until 2am

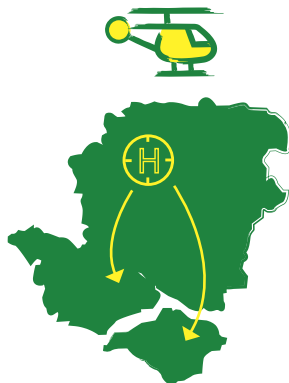


We carry blood and plasma on board. For many of our patients, an emergency blood transfusion before they reach hospital can be the difference between life and death



18,000+

Emergency call-outs since our first flight in 2007
12,433 by air
5,708 by road



When we take to the skies, we can be anywhere in Hampshire in 15 minutes and the Isle of Wight in 20 minutes



We have four Emergency Response Vehicles. If poor weather stops us flying, we'll drive to your side

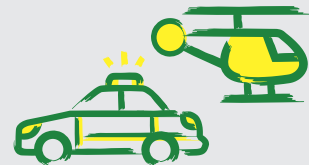


2023 MISSION FIGURES



1,842

Total call-outs. An average of five missions a day



We responded to **1,146** emergencies by air and **696** emergencies by road



In 2023, we responded to **1,308** emergencies during the day and **534** at night



Each mission we attend costs on average

£3,320

As a charity, we rely entirely on the generosity of the public to give our patients the very best chance of survival. It's your support that keeps us flying and saving lives



Registered with
**FUNDRAISING
REGULATOR**

hiowaa.org

Registered Charity Number: 1106234

Figures correct as of January 2024